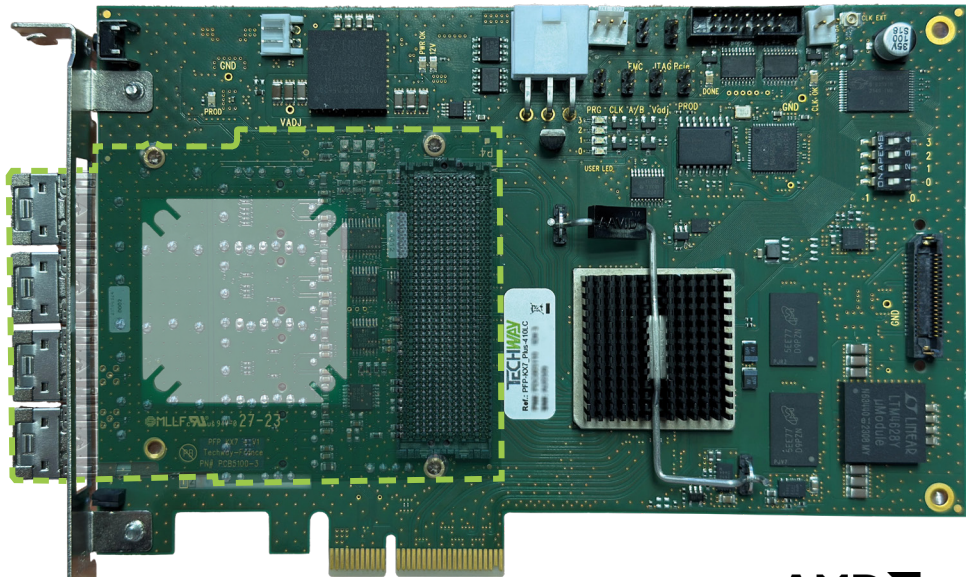


GPU Direct[®]
RDMA

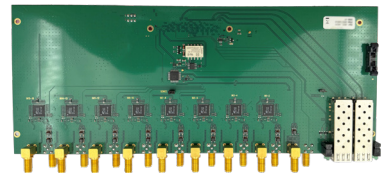
Kintex-7 FPGA

The best performance-price ratio



12 optical links
≤ 10Gbit/s

COTS FMC



16x ADC + 2x SFP/SFP+
Custom design

IN HOUSE FMC

AMD
KINTEX 7

Development Kit included

Integrate your own application

100% in house design

Windows and Linux drivers

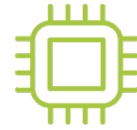


Software



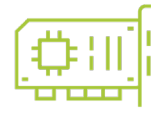
API C++
BSP
Examples
Designs

Firmware



Ready-to-use IPs
(PCIe, Memories, System
management)
Examples

Hardware



User manuals
Reliable 24/7
Long-life cycle



Certified Partner



Key advantages

Robust in production

Power efficiency

Choose your I/O – Our versatile solutions design to your project, compatible with all I/O thanks to FMC+ site.

Manage your IP and reuse your design – Integrate your own firmware and software into our «open for development» solutions.

The right product for the right application.

Included Development kit – accelerate your design : drivers for Linux and Windows, memory controller, high-end PCIe IP and BSP provided.

Long-time products – Our long-lasting solutions ensure optimized production and lower obsolescence costs throughout the lifecycle.

Open for development

Focus on your application

VIDEO

Application examples

SIGNAL

• Video grabber

The PFP-KX7+ allows you to capture 4K video and use DMA to transfer image directly into memory without latency.

• AI platform

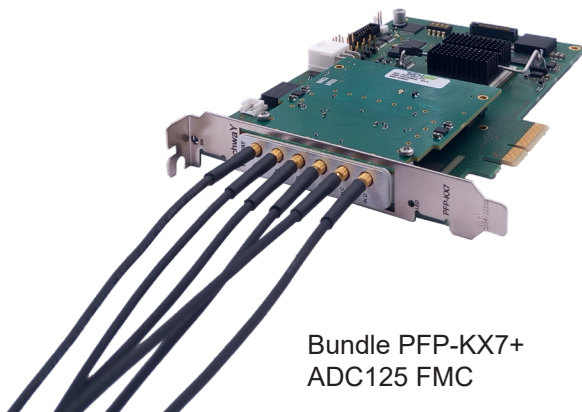
The Kintex-7 FPGA can be used for AI application with simple inference. FPGA solutions have a better ratio for power and puissance than a CPU+GPU solution.

• Test bench

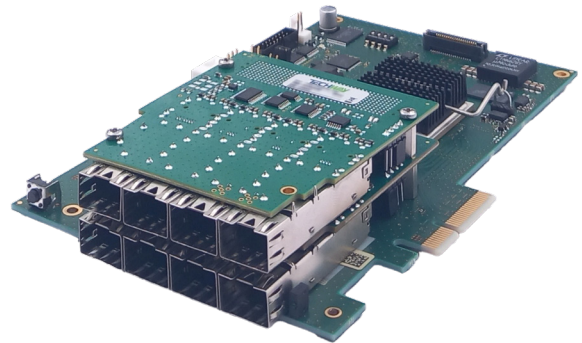
Use the same PFP-KX7+ FPGA board for all your test benches. Change the I/O thanks to the FMC+ site to specify the function or your acquisition.

• Space Wire / Space fiber

The Kintex-7 FPGA from AMD is ideal for space wire / space fiber test bench. The PFP-KX7+ offers DSP and transceivers capability for this type of application.



Bundle PFP-KX7+
ADC125 FMC



Bundle PFP-KX7+
SFP/SFP+ Stackable



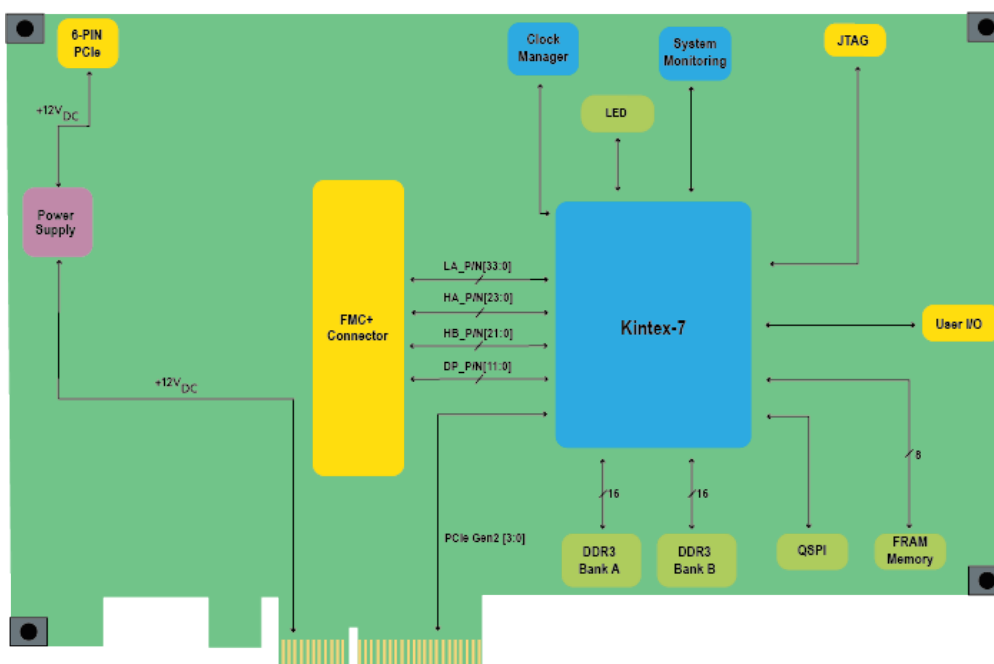
Bundle PFP-KX7+
WildcatFMC-4-MTP

	PFP-KX7+_310LC	PFP-KX7+_410LC
FPGA	AMD Kintex-7 325T-FFG900-2	AMD Kintex-7 410T-FFG900-2
PCIe	PCIe x4 Gen2	
Form factor	Half length	
Grade	Commercial	
Programmable Logic (PL) features		
Logic cell (k)	326	406
CLB Flip-Flop (K)	407	508
Max distributed RAM (kb)	4,000	5,663
DSP Slices	840	1,540
Block RAM (18kb)	890	1,590
Interfaces		
FMC	1x FMC+ connector (VITA 57.4 compliant)	
DP lanes speed	10Gbit/s	
FMC+ DP lanes	12	
Memory banks	2x 512MB DDR3	
User interface	8x I/O LVDS (1x clock-capable) or 18x single-ended	
Cooling	Passive cooling system	
Temperature ranges	<ul style="list-style-type: none"> ■ Operating : 0°C to 70°C ■ Storage : -50°C to 125°C 	
RoHS/REACH	Compliant	

User manuals available on demand

Block diagram

In house design



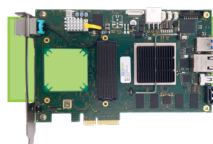
Need customization?
Consult us

Customer satisfaction is our DNA

Long-life cycle product lines



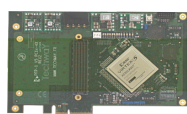
Kintex UltraScale+ FPGA



Zynq UltraScale+ MPSoC



Kintex-7 FPGA



Virtex-5 FPGA

2008 2012 2019 2021 2023 2045 +

Available stock
Fast delivery

Made for
industrialization

Reduce time
to market

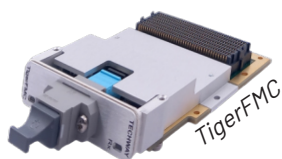
Customization
on demand

COTS FMC

Optical FMC

High-speed / high density
up to @25Gbit/s

High-speed / high density
up to @10Gbit/s



Analog FMC

125 MSPS
4x channels



SFP/SPF+

3/4 cages / stackable



Ordering information

PPF-KX7_Plus_##

For example:

PPF-KX7+_Plus_310LC

##

310LC = XC7K325T

410LC = XC7K410T

Contact our expert team



Configuration subject to validation

www.techway.com



info@techway.com - +33 (0)1 64 53 37 90
Information and photos subject to change without notice

V.03-26